



# **Musical Fence (4' & 6')**

## **Installation Instructions**

NOTES: Please check for any damage caused by the shipping company and take appropriate steps to file a claim, if needed.

\*Please call **Digsafe** and check for any underground utilities before digging anywhere.

### **Materials needed**

Driver / drill (torque driver bit provided in kit), Post hole shovel, spade shovel, level, tape measure, hand tamp, and fourteen (14) 50lb bags of fast-setting premixed concrete (not included). Concrete amount required may vary depending on how deep you can get the holes. Concrete amounts can be easily calculated at <http://www.quikrete.com/Calculator/Main.asp>.

### **Instructions**

1. Remove items from pallet. You should find four (4) L-notched post halves for in ground installation or (2) posts with a set of feet for above ground installation, one (1) fence assembly w/roof, and one package of screws.
2. Attach both pairs of L-notched post halves together with the 3" lag screws provided, screwing three (3) screws per post through the predrilled holes to assemble the two posts.
3. Lay fence assembly on its side and locate top rail (top rail is the one that all the pipes hang from).
4. Remove shipping frame if still attached.
5. Now you'll attach the two posts to the Musical Fence assembly. Set one (1) post on each side of fence assembly, with post top near top rail found in step 3. Also, make sure front side of posts (marked on posts) corresponds with front side of fence assembly.
6. Slide each post in from side and line up top rail of fence assembly with top line on front of each post.
7. Attach the fence assembly to each post with screws (included in package). Make sure to screw both front and back, top and bottom of fence assembly to fence posts (fill all pre-drilled holes).
8. If you ordered the musical fence w/ feet, attach the feet to the legs now with the hardware provided, then move the assembly to the desired location and you're done! If your musical fence is for in ground installation, then proceed to step 9.
9. Move Musical Fence assembly to desired location and lay assembly on ground. Position the Musical Fence assembly so the posts are close to the location you want and mark the location of the post bottoms. (6' Musical Fence is 6'-0" out to out. 4' Musical Fence is 4'-0" out to out).
10. Move the Musical Fence assembly slightly away from marked locations to give you room to dig fence post holes, using post hole shovel or post hole digger.
11. Set the two post hole diameters to 1'-0," and post hole depths to approximately 4'-0" (depending on region). The bottom of hole should "flare" out a little to create a bell shape to prevent frost heaving the post where applicable. Check local codes for the frost line in your area.
12. Using the hand tamp, compact any loose material at the bottom of the hole.
13. Test fit the Musical Fence assembly in the post holes and make any adjustments to the hole location and the length of the post so the post is at the appropriate height and surrounded by equal amounts of concrete when poured. Post are left intentionally long for areas that they need to extend below a frost depth.

# **Musical Fence (4' & 6')**

## **Installation Instructions**

\*Note: If you encounter immovable objects the legs can be trimmed so the grade marks on the legs end up at finished grade.

14. Fill the bottom 6" of hole with drainage stone. Then lift Musical Fence assembly and set bottom of posts into post holes so grade mark is at grade. Again, trim the bottom of the posts if necessary
15. Using a bubble level, plumb the Musical Fence posts in both directions by placing the level on two adjacent sides of each post. Plumb one post first, then plumb the second. Now check the level of the Musical Fence assembly horizontally by placing the level across the top of both posts. Once level and plumb, it is optional to hold this positioning by using strapping and stakes, but it is not required.
16. Holding the Musical Fence assembly upright by hand or with strapping, fill 1/4 of the hole with fast setting concrete mix and add water per instructions on bag. Recheck to make sure Musical Fence is level and plum, and make any adjustments.
17. Fill the rest of the hole with concrete per instructions on bag, stopping four inches below the grade line marked on the musical fence posts. Recheck to make sure Musical Fence is level and plumb periodically while concrete cures. Let cure for 24 hours.
18. Backfill hole and hand tamp good draining soil firmly to 3" below finished grade. Install top soil to finish grade and plant grass to fill in around hole.
19. All wood is treated with kid-friendly preservative, but as is the case with all wood facing the elements, it needs to be cared for, so check it periodically for rough spots, splinters, etc, and sand them out, and treat it with kid-friendly wood preservative (we have it available if you can't find it) once or twice a year to keep the wood from deteriorating.
20. Enjoy your Musical Fence!



**Image 1: Musical Fence Photo**

# Musical Fence (4' & 6')

## Installation Instructions

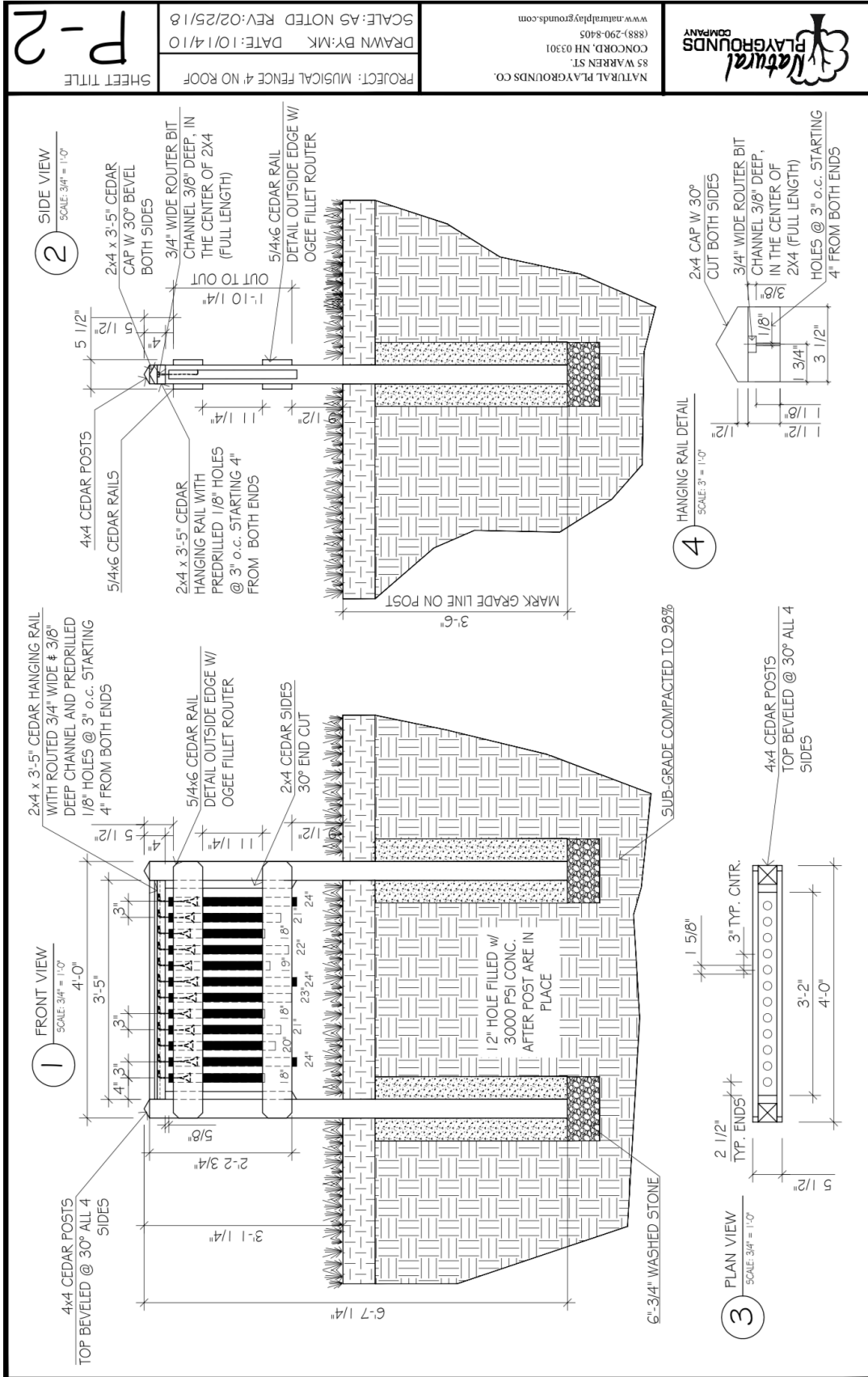


Image 2: 4' Musical Fence Plan

	NATURAL PLAYGROUNDS CO. 85 WARREN ST. CONCORD, NH 03301 (888)-290-8405 www.naturalplaygrounds.com	PROJECT: MUSICAL FENCE 4' NO ROOF DRAWN BY: MK DATE: 10/14/10 SCALE: AS NOTED REV: 02/25/18	P-2 SHEET TITLE
	SCALE: AS NOTED REV: 02/25/18 DRAWN BY: MK DATE: 10/14/10 PROJECT: MUSICAL FENCE 4' NO ROOF		

# Musical Fence (4' & 6')

## Installation Instructions

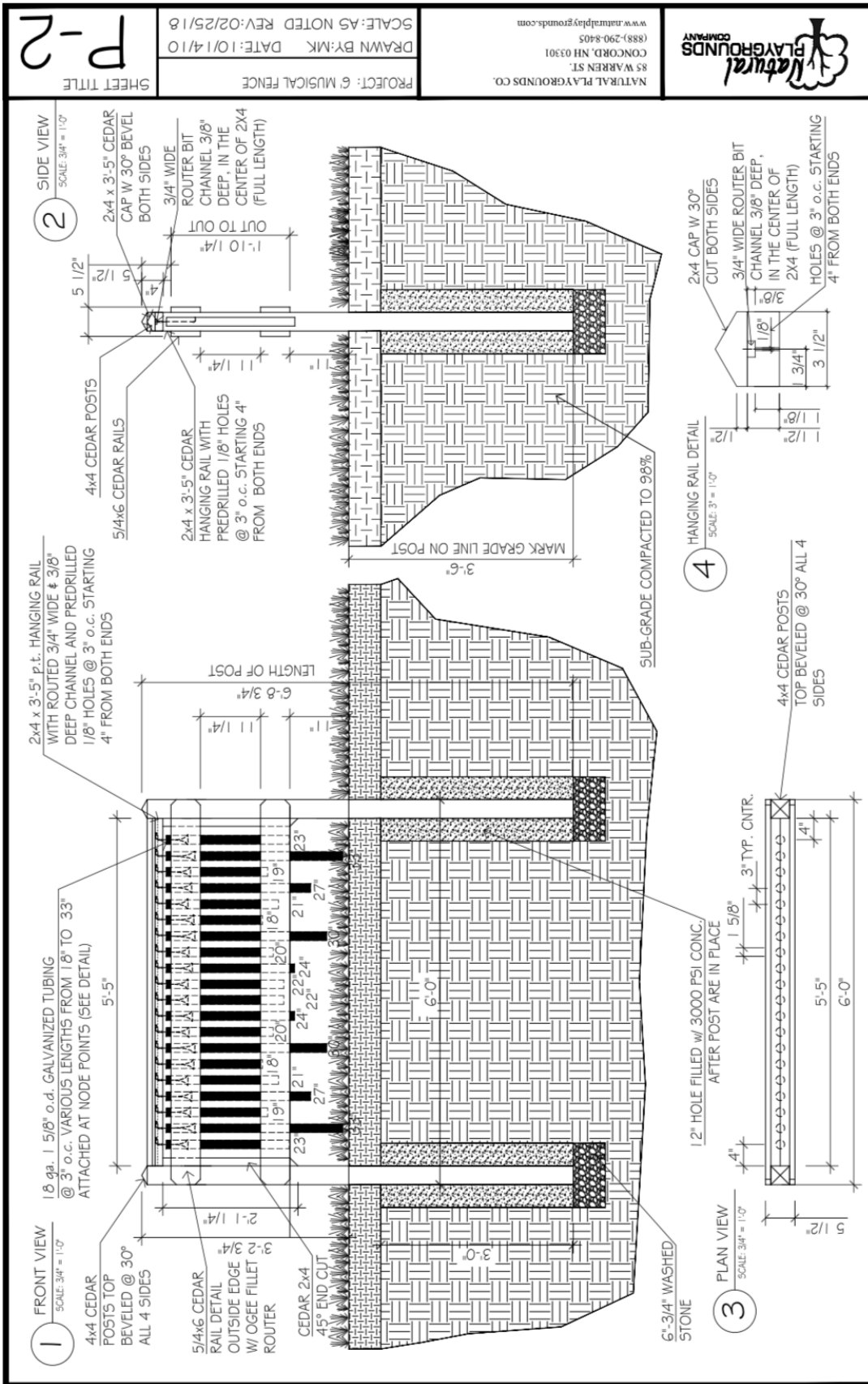


Image 3: 6' Musical Fence Plan